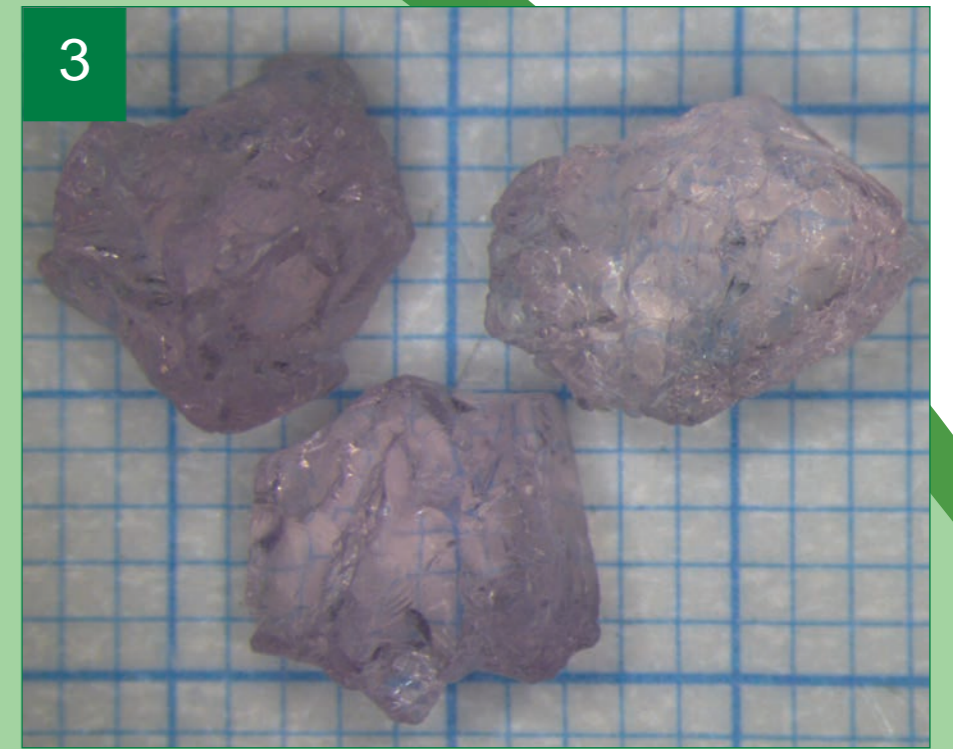
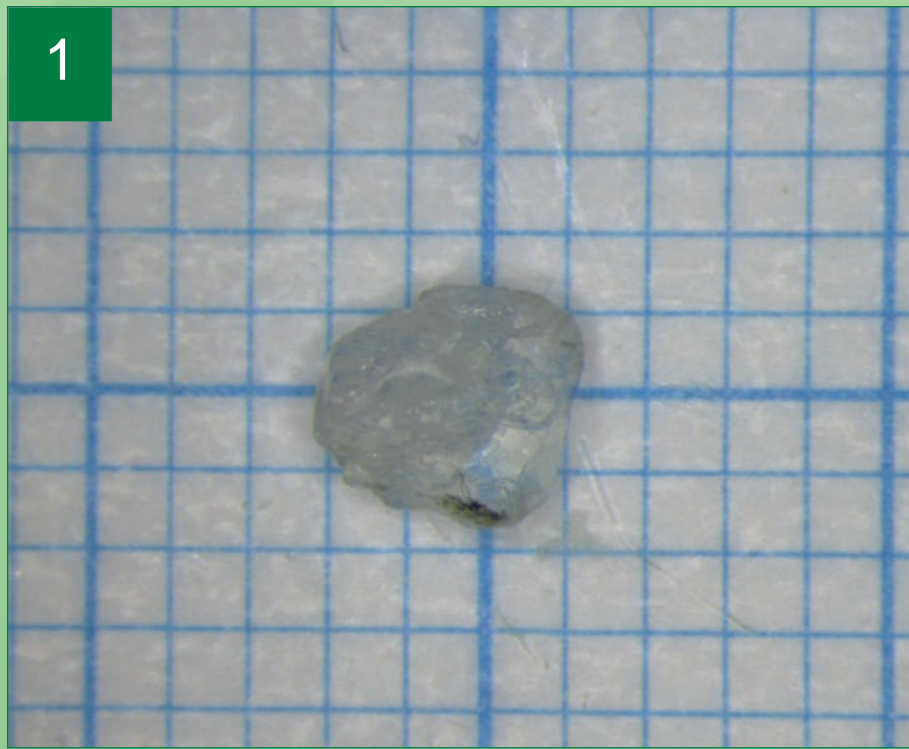
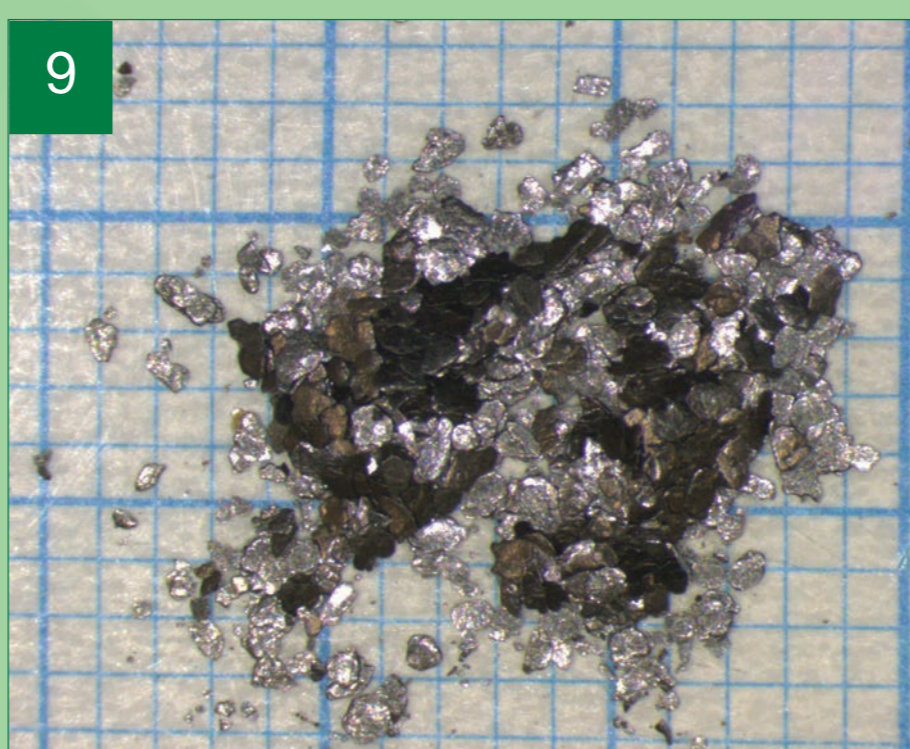
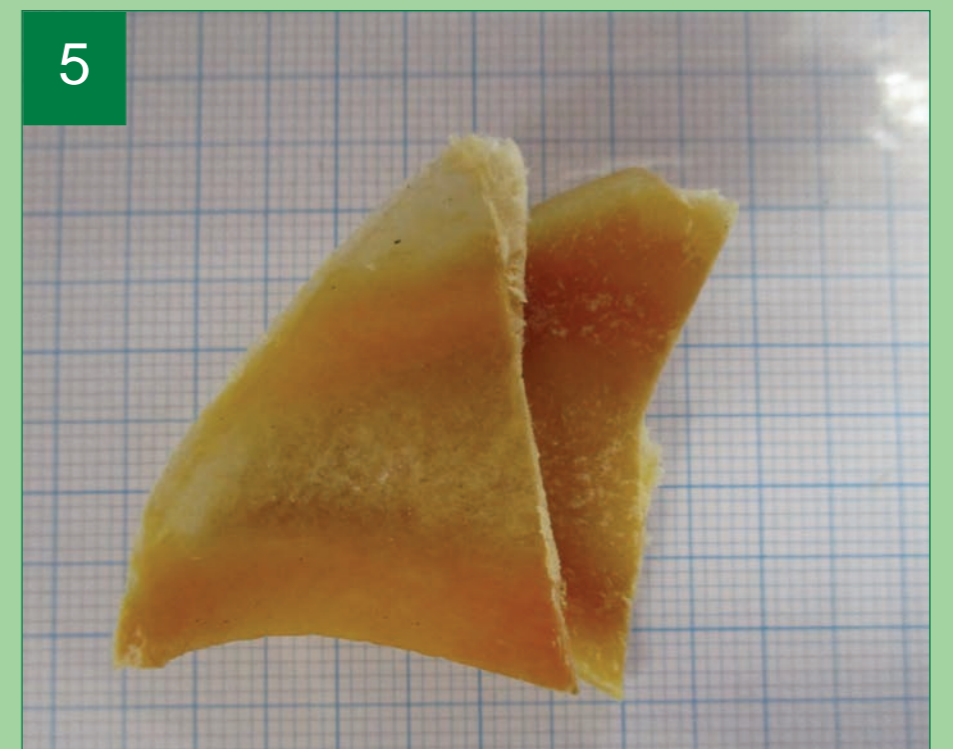


Foreign body analysis



Foreign bodies sent to us are examined and analysed using a range of equipment including stereo and compound microscopes, scanning electron microscope (SEM), X-ray microanalysis and Fourier transform infra-red (FT-IR) spectroscopy.

The first stage for any sample is an initial examination; can you guess what some of these mystery foreign bodies are?



All samples are photographed against a millimetre squared background