

Campden BRI group:

Campden BRI (registered no. 510618)
Campden BRI (Chipping Campden) Limited (registered no. 3836922)
Campden BRI (Nutfield) (registered no. 2690377)

Registered office:

Station Road ♦ Chipping Campden ♦ Gloucestershire ♦ GL55 6LD ♦ UK

Confidential report for:

Campden BRI

FAO : Microscopy Section
Station Road
Chipping Campden
Gloucestershire
GL55 6LD

Report on:

Examination of Foreign Matter Reported from Five Bean Salad

Work performed by Campden BRI (Chipping Campden) Limited
Report number: EM/REP/12345678/1 ♦ Issue date: 28th March 2018

Contact details:

K.A. Hope ♦ Chemistry & Biochemistry ♦ Campden BRI (Chipping Campden) Limited
kathryn.hope@campdenbri.co.uk ♦ Tel: +44(0)1386 842017 ♦ Fax: +44(0)1386 842100

Report issued and authorised by:

Campden BRI (Chipping Campden) Limited

K.A. Hope (Microscopy Section Manager) Z. Larkins (Packaging Group Leader)
G.E. Dale (Special Projects Group Leader)

Our ref: Animal Tissue Report
Page count: 10

- Prior written approval is required for use of the Campden BRI logo and for the reproduction of this report if not reproduced in full.
- Unless this report includes an explicit statement of compliance/non-compliance with a requirement and/or specification, no such statement should be inferred.
- Unless this report includes an explicit statement to the contrary, results reported relate only to the items tested.
- The information provided within this document is given after the exercise of all reasonable care and skill in its compilation, preparation and issue but is provided without liability in its application and use. Any opinions and interpretations are not provided under the auspices of any third party certification or accreditation.
- Unless otherwise expressly agreed in writing and signed by a duly authorised representative of Campden BRI (Chipping Campden) Limited, the services to which this report pertains are subject to our Standard Terms and Conditions of Contract, available upon request or from our website:
<http://www.campdenbri.co.uk/campdenbri/terms.pdf>
- The information in this document is only intended for the individual or entity to whom it is addressed. It may contain privileged and confidential information that is exempt from disclosure by law and if you are not the intended recipient, you must not copy, distribute or take any action in reliance on it. If you have received this document in error please notify us immediately by telephone on +44(0)1386 842000.

[DC: R-AC-9-5-15: 04/15 (18) : R/KAH]



SAMPLE DETAILS

Initial Complaint Date: 5th February 2018
Best Before End: 12/2/2018
Batch No.: R56478
Complaint Reference: RFF/45623
Purchase Order No.: 1524569529

SAMPLE INFORMATION

Date sample(s) received : 21st March 2018
Packaging : In a plastic bag
Storage conditions : Chilled (+2°C to +5°C)
Date(s) sample(s) examined : 23rd March 2018

METHODS AND REFERENCES

Analyst reference : SDA
Method reference(s) : TES-AC-192 : Light Stereomicroscopy
TES-AC-193 : Compound Light Microscopy
Deviations from the method reference(s) : None

RESULTS

The complaint sample consisted of multiple pieces of soft, brown coloured matter which were photographed as received and can be referred to in Plate 1. The sample had a sheet-like appearance. Sections of the sample were taken and examined under a compound microscope. Here it was possible to see; hairs (featuring a follicle) (Plate 2), connective tissue (Plate 3), amorphous protein, muscle fibres (Plate 4), fat (Plate 5), and oil (Plate 6). The sheet-like appearance of the sample and presence of the above structures indicated skin was a possible source.

Sections of the complaint matter also contained; plant cells with convoluted walls (Plate 7), orange coloured plant cells, which contained crystals (Plate 8), plant xylem vessels (Plate 9), plant cells with thickened walls, possibly consistent with mustard (Plate 10), fungal hyphae (Plate 11) and bacterial growth (Plate 12).

CONCLUSIONS

It was concluded that the complaint matter was most likely animal skin. The sample also contained plant matter including some cells suggestive of mustard, fungal hyphae and microbial growth. No structures consistent with legume were seen in the complaint matter, therefore contact with the reported product could not be confirmed.

Sample

PLATE 1 Shows the complaint sample photographed as received against a millimetre-squared background



PLATE 2 Shows some of the hairs (arrowed) seen in a section of the complaint matter. Magnification x 45.5

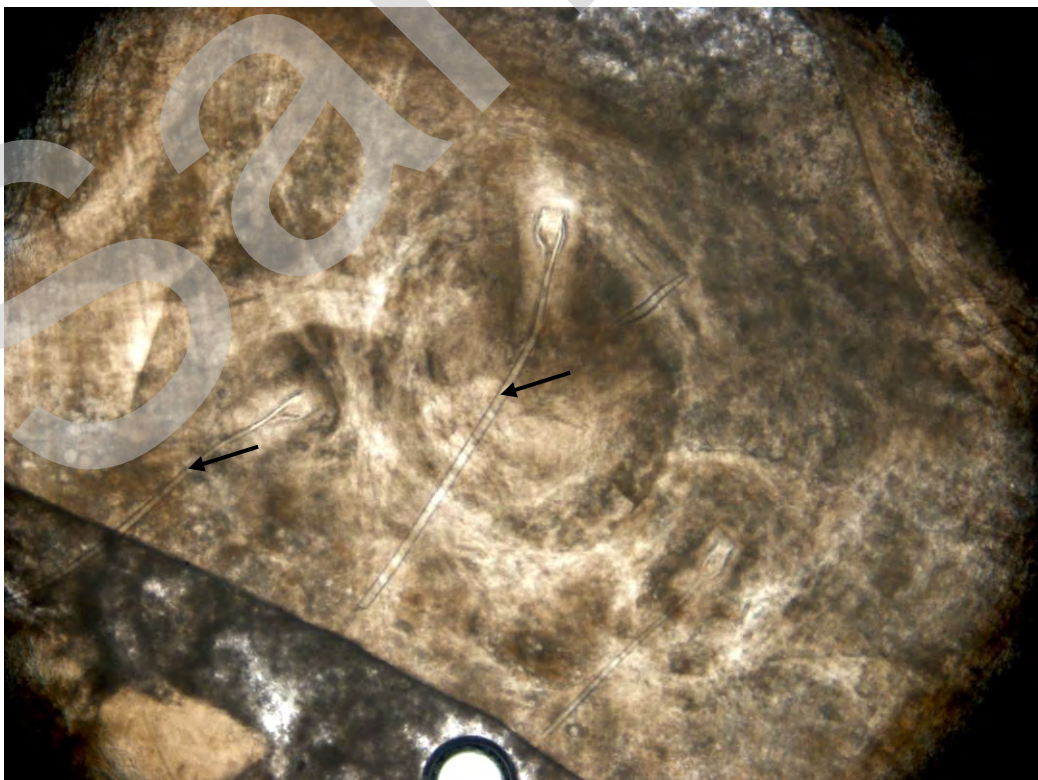


PLATE 3 Shows some of the connective tissue, highlighted pink/red with eosin seen in a section of the complaint matter. Magnification x 235

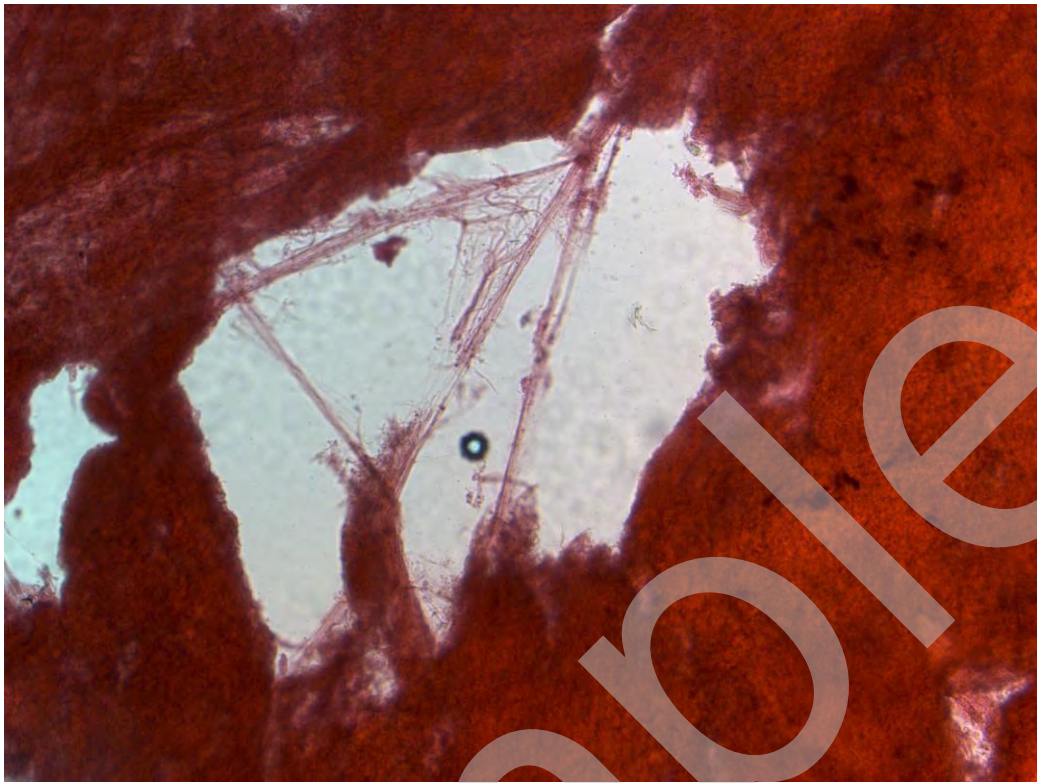


PLATE 4 Shows one of the muscle fibres seen in a section of the complaint matter. Magnification x 365

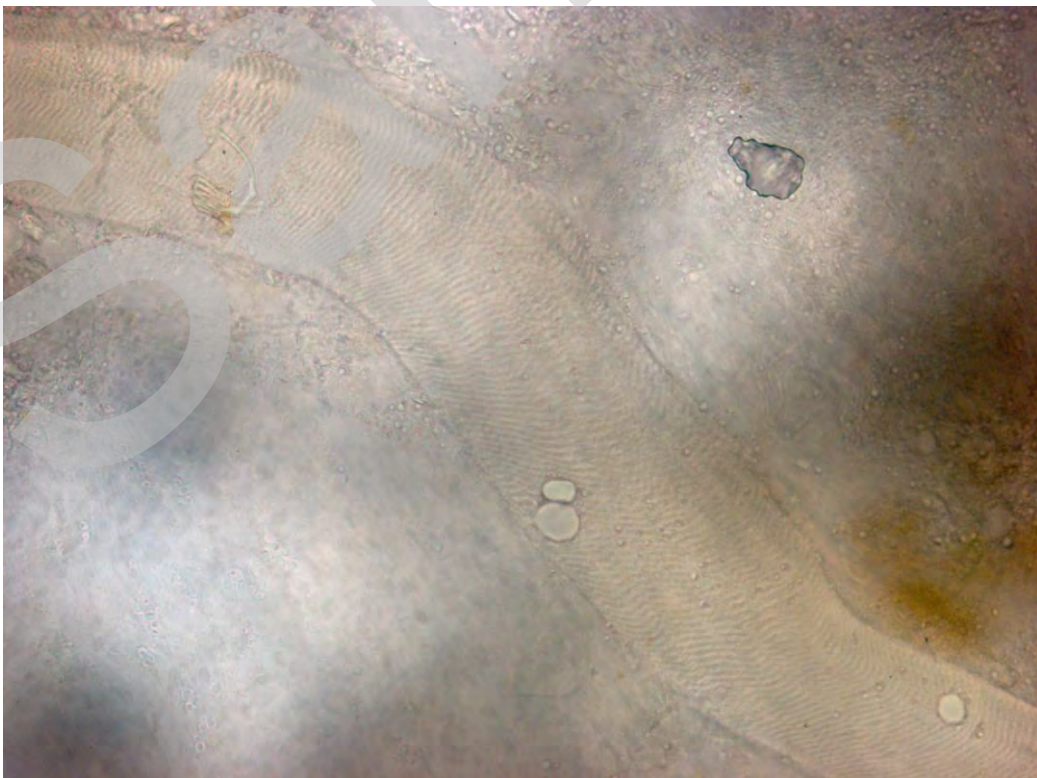


PLATE 5 Shows some of the fat seen in a section of the complaint matter, viewed under cross-polarised light. Magnification x 182

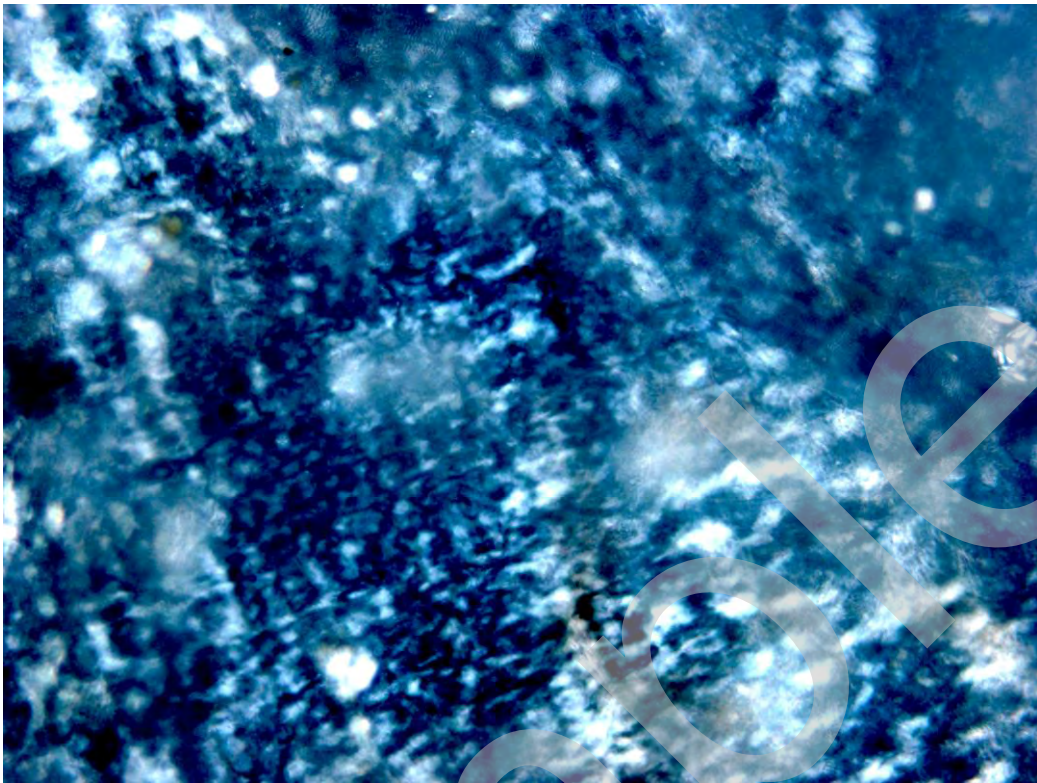


PLATE 6 Shows some of the oil seen in a section of the complaint matter, stained with Oil Red O. Magnification x 91

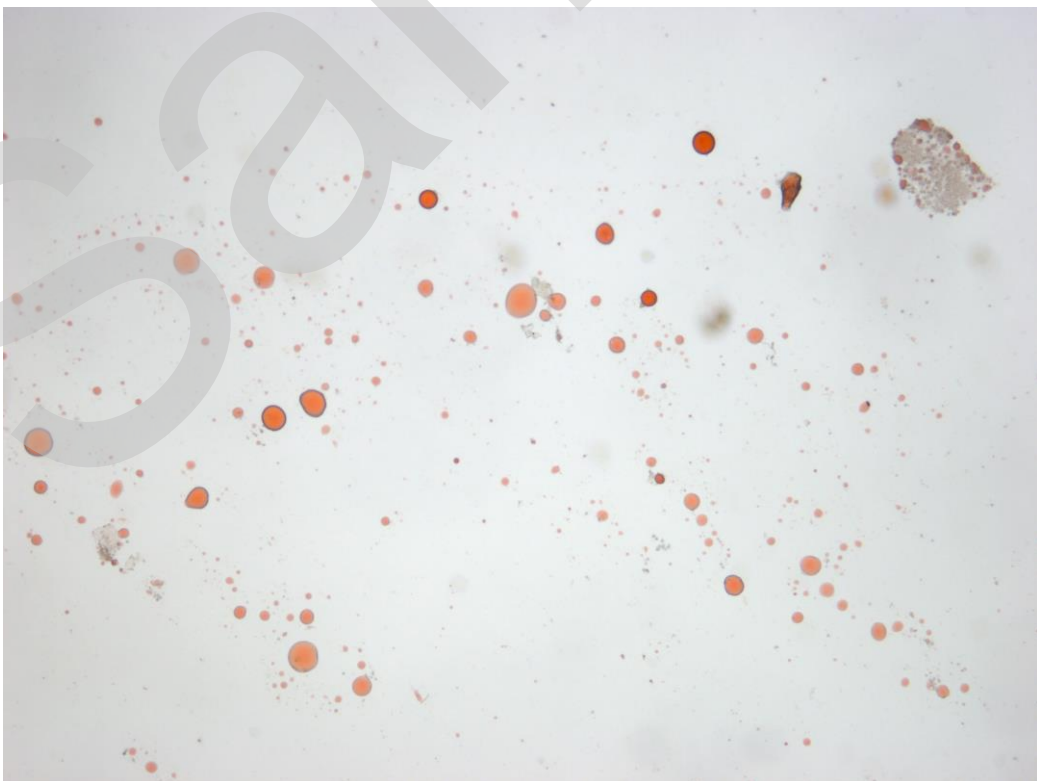
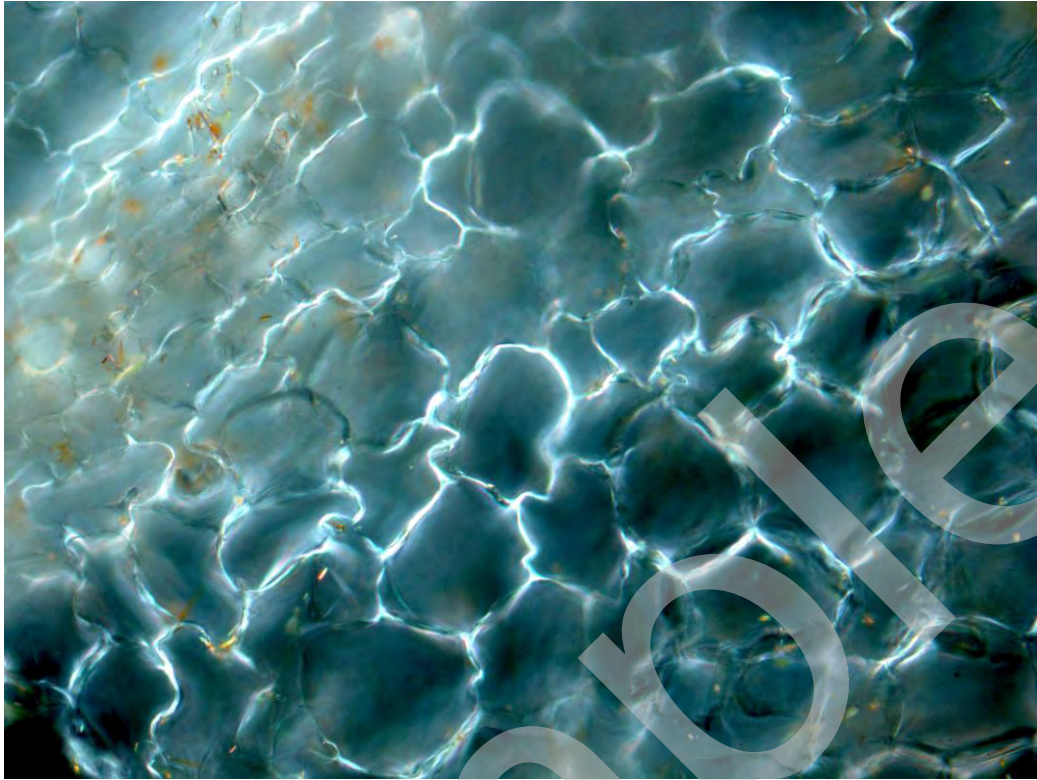


PLATE 7 Shows some of the plant cells with convoluted walls, viewed under polarised light, seen in a section of the complaint sample. Magnification x 365



Sample

PLATE 8 Shows some of the orange coloured plant cells which contained crystals, seen in a section of the complaint sample, viewed under bright-field light (top) and cross-polarised light (bottom). Magnification x 365



PLATE 9 Shows some of the xylem vessels seen in a section of the complaint sample. Magnification x 365



PLATE 10 Shows some of the plant cells with thickened walls seen in a section of the complaint matter. Magnification x 365

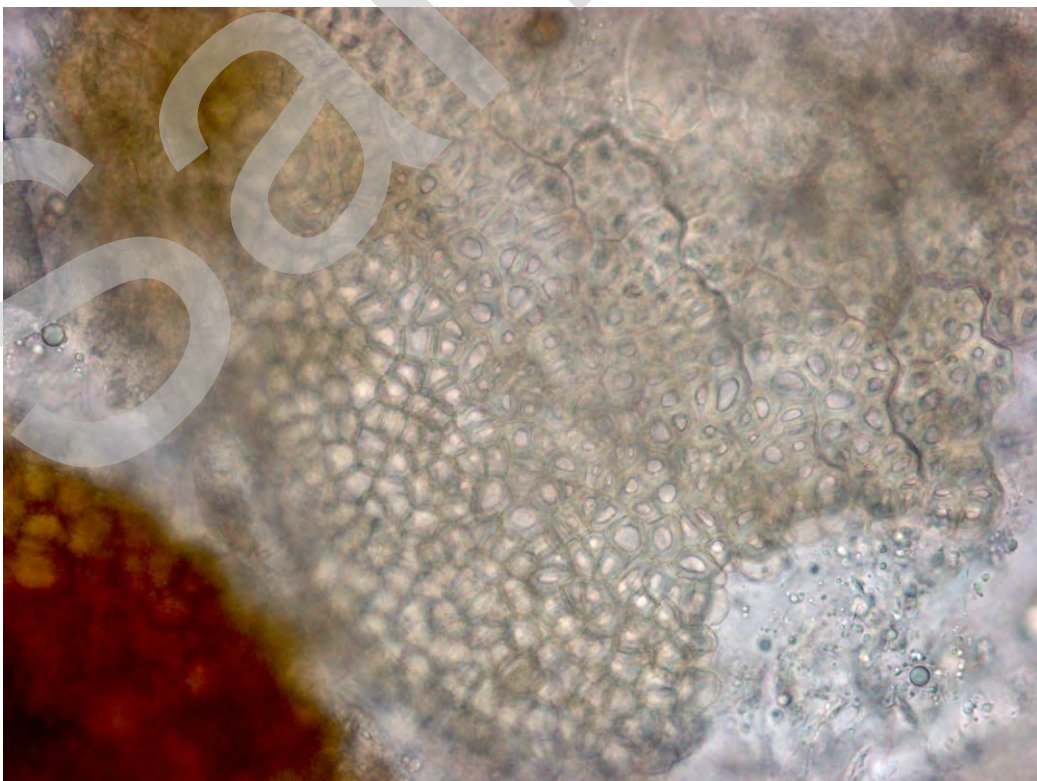


PLATE 11 Shows some of the fungal hyphae seen in a section of the complaint matter.
Magnification x 1090

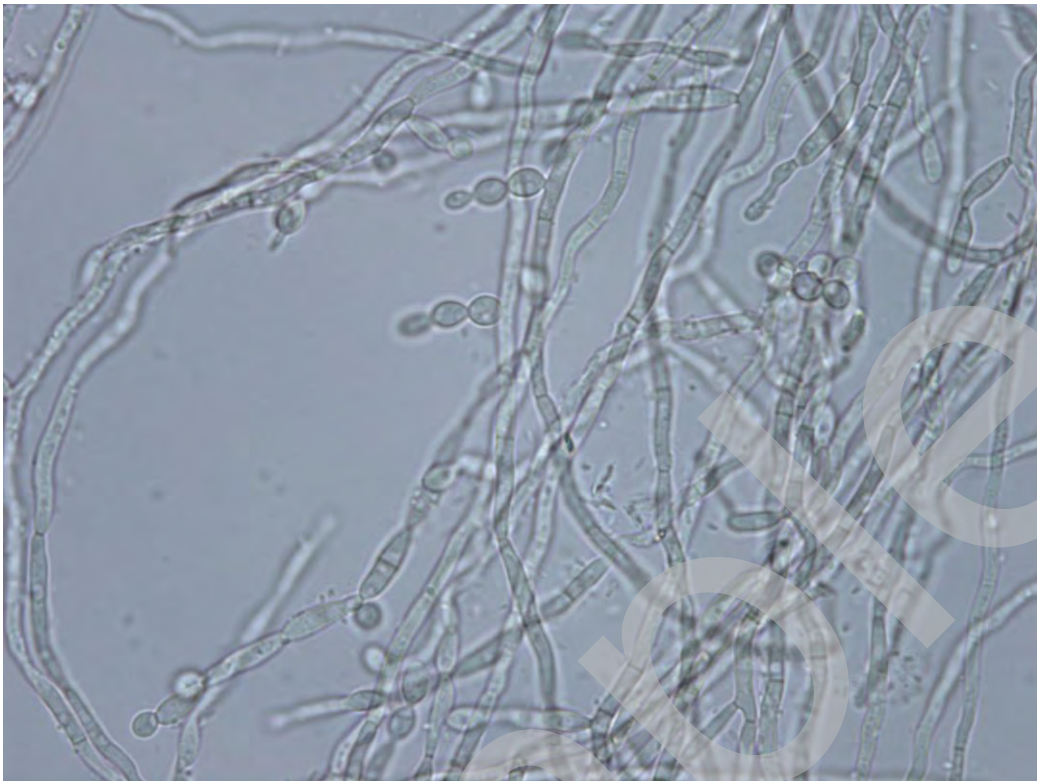


PLATE 12 Shows some of the bacterial growth seen in a section of the complaint matter.
Magnification x 1090

