

**Campden BRI group:**

Campden BRI (registered no. 510618)  
Campden BRI (Chipping Campden) Limited (registered no. 3836922)  
Campden BRI (Nutfield) (registered no. 2690377)

**Registered office:**

Station Road ♦ Chipping Campden ♦ Gloucestershire ♦ GL55 6LD ♦  
UK

**Confidential report for:**

**Campden BRI**

FAO: Microscopy Section  
Station Road  
Chipping Campden  
Gloucestershire  
GL55 6LD

**Report on:**

**Examination of a Foreign Body Reported from Steak and Kidney Pie**

Work performed by Campden BRI (Chipping Campden) Limited  
Report number: MI/REP/181325-002564 ♦ Issue date: 20<sup>th</sup> April 2018

**Contact details:**

K.A. Hope ♦ Chemistry & Biochemistry ♦ Campden BRI (Chipping Campden) Limited  
kathryn.hope@campdenbri.co.uk ♦ Tel: +44(0)1386 842017 ♦ Fax: +44(0)1386 842100

**Report issued and authorised by:**

Campden BRI (Chipping Campden) Limited

K.A. Hope (Microscopy Section Manager)  Z. Larkins (Packaging Group Leader)   
G.E. Dale (Special Projects Group Leader)

Our ref: Hair Report  
Page count: 7

- Prior written approval is required for use of the Campden BRI logo and for the reproduction of this report if not reproduced in full.
- Unless this report includes an explicit statement of compliance/non-compliance with a requirement and/or specification, no such statement should be inferred.
- Unless this report includes an explicit statement to the contrary, results reported relate only to the items tested.
- The information provided within this document is given after the exercise of all reasonable care and skill in its compilation, preparation and issue but is provided without liability in its application and use. Any opinions and interpretations are not provided under the auspices of any third party certification or accreditation.
- Unless otherwise expressly agreed in writing and signed by a duly authorised representative of Campden BRI (Chipping Campden) Limited, the services to which this report pertains are subject to our Standard Terms and Conditions of Contract, available upon request or from our website:  
<http://www.campdenbri.co.uk/campdenbri/terms.pdf>
- The information in this document is only intended for the individual or entity to whom it is addressed. It may contain privileged and confidential information that is exempt from disclosure by law and if you are not the intended recipient, you must not copy, distribute or take any action in reliance on it. If you have received this document in error please notify us immediately by telephone on +44(0)1386 842000.

[DC: R-AC-9-5-15: 03/15 (17) : R/KAH]



## SAMPLE DETAILS

Initial Complaint Date: 1<sup>st</sup> April 2018  
Complaint Reference: 15HJKLMN  
Purchase Order No.: 10-025-0256-02

## SAMPLE INFORMATION

Date sample(s) received : 3<sup>rd</sup> April 2018  
Packaging : In a sealed plastic bag  
Storage conditions : Ambient temperature  
Date(s) sample(s) examined : 10<sup>th</sup> April 2018

## METHODS AND REFERENCES

Analyst reference : SDA  
Method reference(s) : TES-AC-192 : Light Stereomicroscopy  
TES-AC-193 : Compound Light Microscopy  
Deviations from the method reference(s) : None

## RESULTS

The complaint sample consisted of two pieces of black/red coloured matter, which were photographed as received and can be referred to in Plate 1. Both pieces were organic in appearance and each had one edge with black fibres protruding. One of the pieces showed signs of mould on its surface. The fibres appeared intrinsic to the whole sample.

Sections of the complaint matter and the black fibres were taken and examined under the compound microscope. In the complaint matter it was possible to see muscle fibres (Plate 2) connective tissue (Plate 3). The black fibres were identified as hairs with a mosaic scale pattern (Plate 4), an amorphous medulla (Plate 5), streaked pigmentation (Plate 6) and ovoid bodies. This is consistent with hairs from a cow.

## CONCLUSIONS

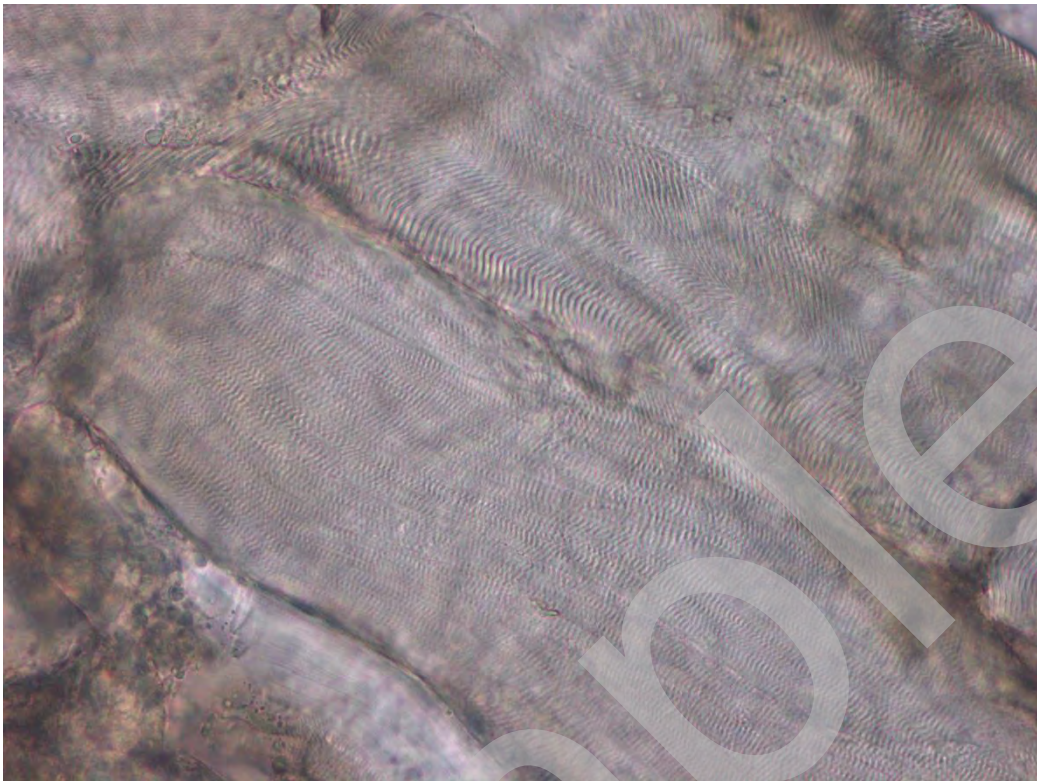
It was concluded that the complaint sample consisted of two pieces of proteinaceous matter, most likely from skin due to the presence of hair. The hairs from the sample were consistent with the hair from a cow. Due to the nature of the complaint sample it was considered to have most likely to have originated from an ingredient of the reported product.

Sample

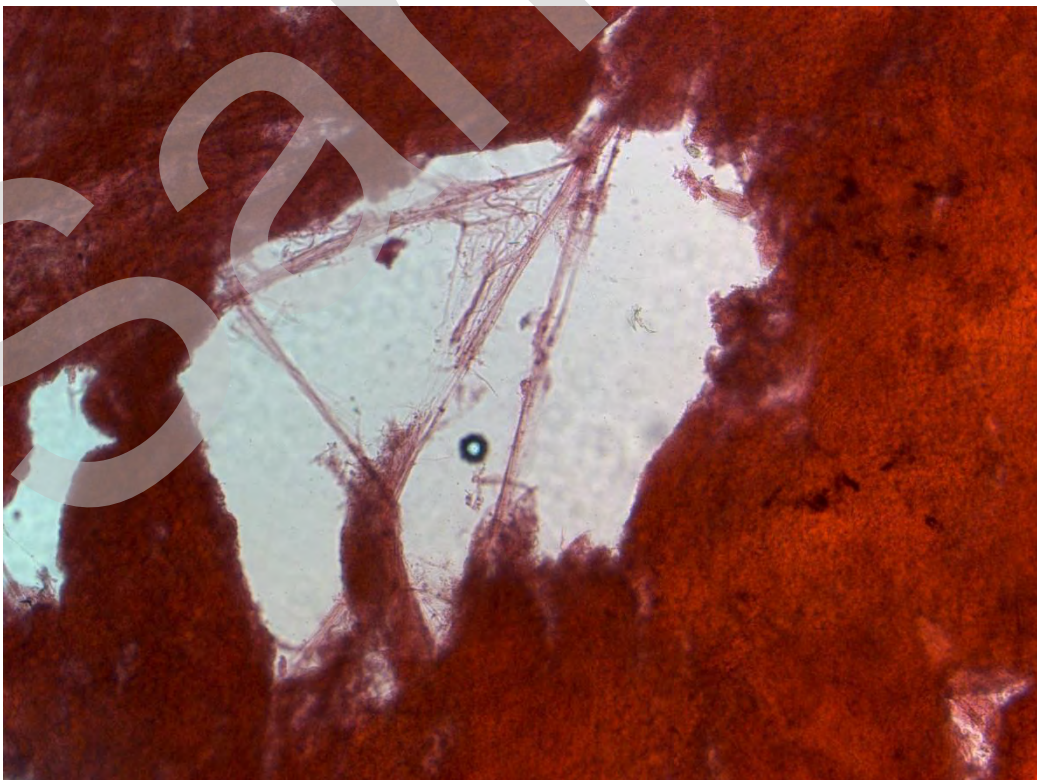
**PLATE 1** Shows the complaint sample photographed as received against a millimetre-squared background



**PLATE 2** Shows an example of the muscle fibres, seen in the complaint matter.  
Magnification x 435



**PLATE 3** Shows some of the connective tissue, highlighted pink/red with eosin seen in a section of the complaint matter. Magnification x 235



**PLATE 4** Shows an example of the mosaic scale pattern, seen in a scale cast made from the black hairs of the complaint sample. Magnification x 1110



**PLATE 5** Shows an example of the amorphous medulla, seen in the black hairs of the complaint sample. Magnification x 435



**PLATE 6** Shows an example of the streaked pigmentation, seen in the black hairs of the complaint sample. Magnification x 1090



Sample